

EIKI

Portable Smart Screen

User guide

Model: TR32



Contents

Preface	3
Warning	3
Packing List	5
Product Specifications	6
Adjusting Angle and Height	7
Port Connection Instructions	8
Touch	9
Power Adapter Instructions	10
Internal Battery Instructions	11
Anti-slip Device Instructions	12
Screen Mirroring	12
Download application software	13
Instructions for using the remote control	14
FCC Statement	15
Energy Star	16

Preface

Thank you for choosing portable screen!

Before starting up, please carefully read this user manual to understand how to use the device and important precautions.



Warning

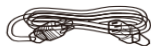
- * Use only the power adapter accessory provided by the original manufacturer.
- * The gaps and openings on the device are designed for ventilation and heat dissipation, Do not block or cover them.
- * Do not use or store the device in dusty, humid, or high-temperature environments.
- * Do not attempt to disassemble or repair the device if it malfunctions. Contact the original manufacturer or dealer for assistance.
- * Avoid stepping on the power cord or power adapter to prevent damage to the wires that may cause electrical hazards. If the power adapter's cord is damaged, do not continue to use it as it may be dangerous.
- * During thunderstorms or when the device will not be used for an extended period, unplug the power cord.
- * Do not place the device on the edge of a desk or in areas where children may easily access it to avoid

damage or injury to the child.

- * During transport, do not apply excessive pressure on the display screen or scratch it with sharp or hard objects, as this may cause damage to the screen.
- * Use a dry, soft cloth or a slightly dampened soft cloth with a mild cleaning solution to clean the device.
- * Do not use any type of solvent, such as alcohol or gasoline, as it may damage the surface treatment layer.
- * Make sure children understand the danger of climbing on the product, as dropping or tilting the product may cause serious injury.
- * Do not place the product in an unstable or tilted position.
- * Keep the cables connected to the product organized to avoid tripping, pulling or grabbing.

Packing List

After opening the package, please confirm the contents of the package below.



Power Cord



Allen key



Power adapter



Remote control



Screw

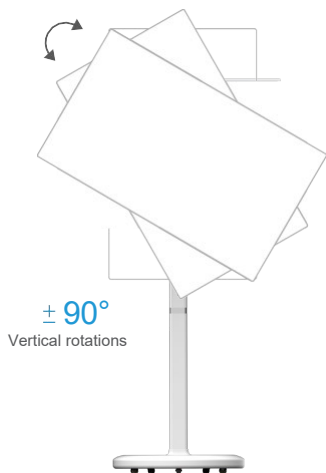
Product Specifications

Specifications vary by model configuration.

System	CPU	QCM6125-8 cores(4*A73+4A53)-64bit (Qualcomm DC665)
	RAM	8GB
	Memory	128GB
	Operating System	Android 13
Specifications	Display	32-inch
	Resolution	1920*1080
	Touchscreen	10-point touches
	Aspect Ratio	16:9
Interfaces	Wi-Fi	802.11 a/b/g/n/ac 2.4/5GHz WIFI, support WiFi hotspot or BT 4.2
	Front Type-C	Supports charging function or Audio Mode
	USB	USB *1
Others	HDMIIN	1920*1080@60HZ
	VESA	100x100mm
	Buttons	Power
	Gravity Sensor	Supports 90°rotation
	Speaker	4Ω*5W
	Input Current	1.6A
	Built-in battery capacity	14.8V/8000mAh
	Storage Temperature	-20℃---60℃
	Working Temperature	0℃---45℃ 10~90%RH
	Product size	Main unit: length 723MM*width 420MM*thickness 45MM Lifting rod: height 1198MM Base: outer diameter 465MM Outer box size: 795*670*200MM
	Gross Weight	Gross weight: 21 KG, Net weight: 18 KG

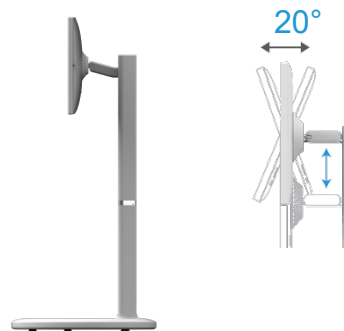
Adjusting Angle and Height

To achieve a better viewing experience, the monitor can be adjusted for tilt (front-back tilt of -20° to 20°), rotation (Counterclockwise rotation of 90°)



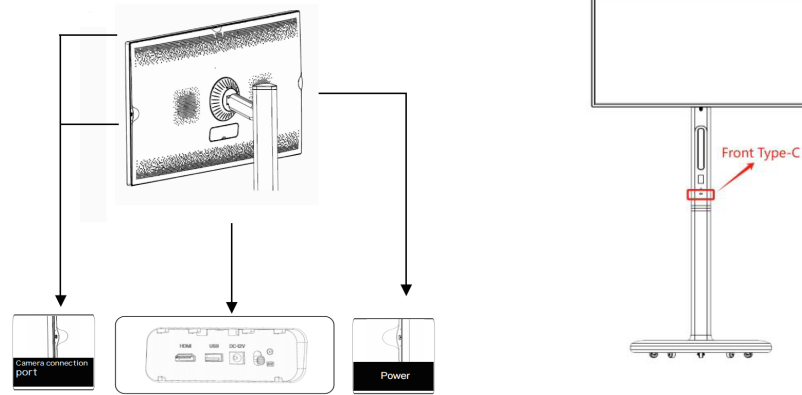
Lean forward and backward

(the product is subject to the actual situation, this picture is for display only)



Port Connection Instructions

This monitor is equipped with a variety of ports to support multiple external devices:



DC IN: When the battery is connected, it cannot be recharged, nor can it power the device, When the battery is unconnected, Plugging in an adapter can start the device, But it cannot be charged.

HDMI IN: Connect to an external high-definition video signal input.


Front Type-C: supports charging function or audio mode.

USB : USB storage device or mouse and keyboard receiver.

Touch

Adopt full HD ten-point infrared touch LCD screen. To maintain the touch effect, please keep the screen clean.



Button	Function
	When the product is turned off: press and hold for 2-3 seconds to turn on the product. When the product is turned on: press and hold for 2-3 seconds to enter the shutdown confirmation [shutdown/restart] Short press to enter the screen-off state, and short press again to exit the screen-off state.

Power Adapter Instructions

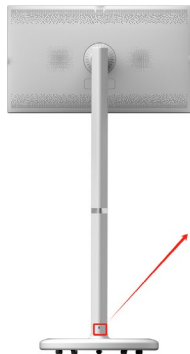
Please plug the power adapter into the base, the base light will turn on, indicating that the power is working properly.
Do not allow children to play with the power adapter and ensure it does not come into contact with water.



When the AC plug of the adapter is plugged into the wall to power the stand, move the product as little as possible to avoid the risk of electric shock caused by forcefully pulling or damaging the power cord.

Internal Battery Instructions

This product holder has a built-in rechargeable battery and can be used for a period of time without connecting to other power sources. When the battery is exhausted, you can connect the charger to charge it. When the charger is plugged into the Type-C port on the base, the power indicator will turn blue. When the charger is unplugged, the power indicator will go out, indicating that the battery is powering the holder.



Blue light: Charging the battery and providing power to the stand with the charger plugged in

Note:

It takes about 5 hours to fully charge the battery while using the device at the same time, and approximately 4 hours to fully charge the battery when the device is turned off. After the battery is fully charged, the device's battery life is approximately 3.5 hours.

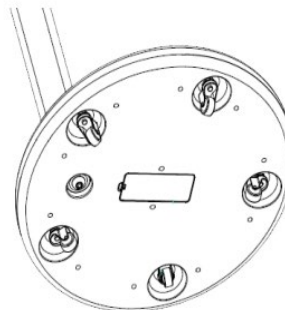
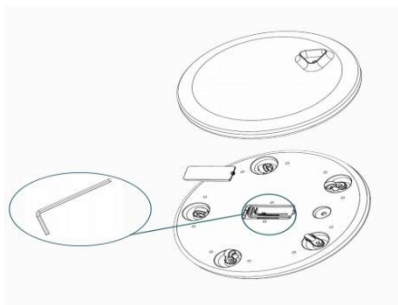
The battery life and battery runtime are proportional to the device usage time.

To extend the battery life, it is recommended to charge the battery after using it for a period of time. After the battery is fully charged, do not leave it in a fully charged state for a long time, and do not charge the battery under extreme conditions.

The standard usage time in this manual is based on test data from our company's laboratory and may vary depending on usage conditions.

Anti-slip Device Instructions

The anti-skid device is used to fix the equipment in place or on an inclined surface. Installation method: open the wrench cover, take out three wrenches, remove the original screws at the corresponding positions of the anti-skid device according to the picture, put the screws into the foot pads, tighten the nut with a screwdriver, align the screw head with the hole and tighten it.



Screen Mirroring

Wireless screen projection, supports multiple protocols: Apple AirPlay, Miracast, DLNA.

Enter the desktop->click QuickShare application

For Android phones: (download USB Display application): the phone and device are in the same network->the phone enters USB DisplayAPP->enter the screen projection code or search through the network or use the scan code to connect, click "Start Screen Projection".

For iPhone: the phone and device are in the same network->iPhone enters the control center->click "Screen Mirroring"->select the name of the device to be projected->the device displays the iPhone screen, and the screen projection is successful.

For Windows: (download USB Display application): the computer and device are in the same network->open USB DisplayAPP->enter the screen projection code or search through the network or use the IP address to connect, click "Screen Projection".

For Mac: Computer and device are on the same network -> pull down the control panel and click screen mirroring -> Select the name of the device to be mirrored -> Device displays screen, screen mirroring successful.

Tips:When no devices is connected for 10 minutes,the Screen Cast will automatically turn off.

Download application software

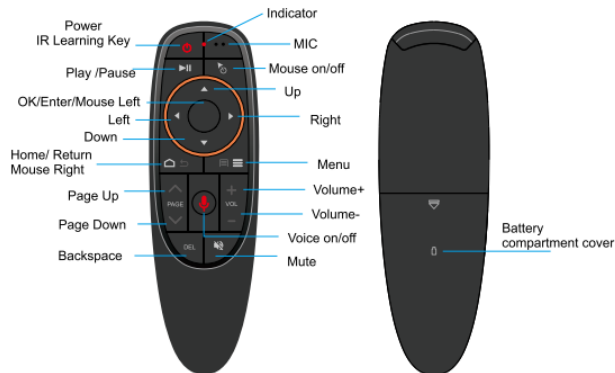
Device enters "Google Play Store -> Log in to Google account -> Select the downloaded application -> Install successfully. "

Not all applications are supported for running on Smart TV or support screen rotation. Please choose appropriate applications for download and use.

Instructions for using the remote control

2 . 4G Air Mouse & Fidelity voice Input

Product icon



How to use

When using for the first time, insert the USB receiver into the USB port of the device and wait for 20-60 seconds to install the driver of the USB receiver. Move the mouse. The mouse cursor can move on the screen to indicate successful pairing.

If unsuccessful, press and hold the "OK" and "Home" buttons, and the LED light starts flashing. When the LED light stops flashing, pairing is successful.

IR Learning(take the example of learning"power"button)

1. Keep pressing Power"button.
The air mouse enters IR learning mode when the LED flashes slowly.
2. Press the"power"button when you aim the IR transmitter with air mouse.
Air mouse receives the code successfully if LED light.
3. LED flashes slowly means that Air mouse has finished learning.
4. Data will be saved automatically and the product will exit learning mode.
5. Press"Power"+"OK"to clean the code up.

Air Mouse has 3 levels of cursor speed.

From slow to fast:
Press and hold"ok"and"Volume+"buttons.
The speed adjusts one level when LED light on.

From fast to slow:
Press and hold"ok"and"Volume-"buttons.
The speed adjusts one level when LED light on.

Function Keys:

- ☐ **Home:** Go back to the home;
- ↶ **Return:** Go back to previous screen;
- **OK:** Confirm action or insert cursor;
- ⏸ **Cursor Locking:** Press to lock the air mouse, press again to unlock;
- ⏮ **Play/Pause:** Multimedia play/pause.

Voice Switch:

Press and hold "voice Switch" to turn on voice channel.
Release the key to turn off voice channel.

Low battery reminder:

The red light flashes slowly when the AAA battery power of the product is lower than 2v.
It means that the battery need to be replaced at this time.

FCC Statement

This device complies with Part 15 of the FCC Rules. Operation is subject to the following two conditions

1. This device may not cause harmful interference
2. This device must accept any interference received, including interference that may cause undesired operation.

Warning: Changes or modifications not expressly approved by the party responsible for compliance could void the user's authority to operate the equipment

NOTE: This equipment has been tested and found to comply with the limits for a Class B digital device, pursuant to Part 15 of the FCC Rules. These limits are designed to provide reasonable protection against harmful interference in a residential installation. This equipment generates uses and can radiate radio frequency energy if not installed and used in accordance with the instructions, may cause harmful interference to radio communications. However, there is no guarantee that interference will not occur in a particular installation. If this equipment does cause harmful interference to radio or television reception which can be determined by turning the equipment off and on, the user is encouraged to try to correct the interference by one or more of the following measures:

Reorient or relocate the receiving antenna

Increase the separation between the equipment and receiver.

Connect the equipment into an outlet on a circuit different from that to which the receiver is connected

Consult the dealer or an experienced radio/TV technician for help.

RF warning statement:

The device has been evaluated to meet general RF exposure requirement. The device can be used in portable exposure condition without restriction.

This device complies with parts of the FCC rules. Operation is subject to the following two conditions:

This device will not cause harmful interference;

This device must accept any interference received, including interference that may cause undesired operation

This product complies with the essential requirements of European safety regulations and has passed the product safety conformity assessment procedure. It also has a manufacturer's declaration of conformity to ensure that every product delivered to the customer is safe.



Android is a trademark of Google LLC

Energy Star

Energy Star is an energy saving program for consumer electronics led by the U.S. government. It was launched in 1992 by EPA and DOE to reduce energy consumption and greenhouse gas emissions. Energy Star logo is a symbol of energy conservation and environmental protection. It improves the concept of energy efficiency of consumers and manufacturers, and effectively guides the market.

The regulation of Energy Star improves energy efficiency and reduces air pollution by using more energy-efficient equipment in homes, offices and factories. One way to achieve this goal is to use management to reduce energy consumption when products are not in use.

The default settings for monitors conform to Energy Star certification. Any changes by users for more features and functionalities may increase power consumption, which will exceed the limitation of Energy Star's standard. If the user changes the options related to energy efficiency when using, such as brightness, color mode, etc, select All Reset Factory or choose the Energy Star option, the power consumption will be restored to the energy efficiency with Energy Star standard.

For more information, please refer to (www.energystar.gov/products). All products of Energy Star will be posted online and can be accessed directly by governments, public institutions and consumers.



ENERGY STAR
PARTNER 16