

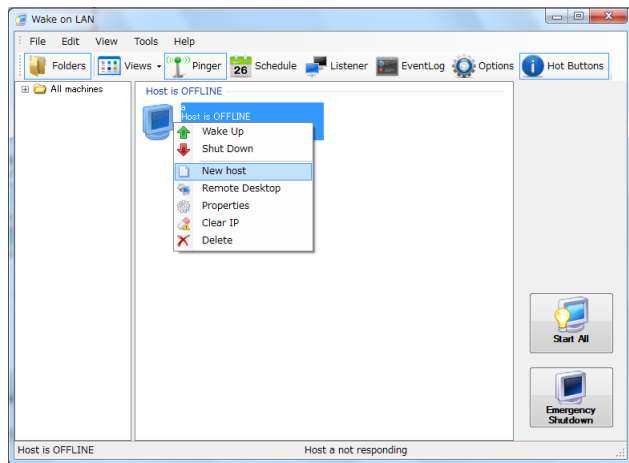
Note:

Please install this software with the OS:Windows7 or after.

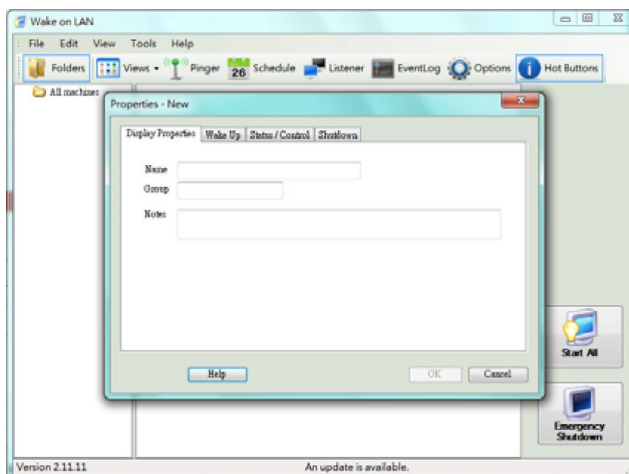
*Windows XP might not be able to launch this software property.

1. Install and launch the software.

Right click and select the "New Host".



2. Add the information of "Name" and the "Group" in the [Display Properties] page from the pop-up window.



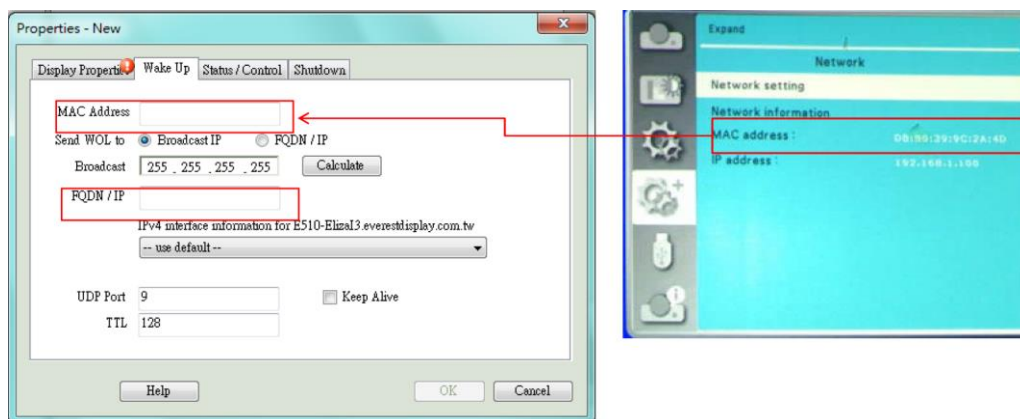
3. Add the information in "MAC address" field and the "FQDN/IP" field in the [Wake Up] page in the red rectangles.

*Keep the setting of "Send WOL to" as "Broadcast IP", not as "FQDN/IP".

*The information of MAC address should be copied from the OSD (Menu>Expand>Network).

*The information of FQDN/IP can be set any number. (For example, "1")

Press OK to finish the setting.



4. Right click and select "Wake up" to power on the projector.

